

GATEWAY & ANTENNA

Match-Up Guide

This Guide shows Mobile Mark Antennas that are COMPATIBLE with your  Gateway!



BulletCAT4-GL Gateway



LTE³-CAT4NA2



LTECubeCAT4-GL-WIFI



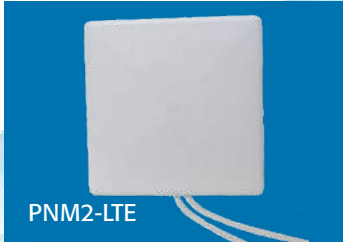
LLP Series



PND10-700/2700



Y42700WB-2X



PNM2-LTE



NTG-1575



MXF Series



LTM Series



RM-WB1



OD3-600/6000



MAG-1575



SMG-1575

GATEWAY & ANTENNA

Match-Up Guide

This Guide shows Mobile Mark Directional Antennas that are COMPATIBLE with your



BulletCAT4-GL Cellular Gateway



	4G LTE Router 703 - 2690 MHz		GPS/GNSS
	1	2	3
Connections:			
Option #1			
PND10-700/2700 (695 - 2700 MHz) - Dual Female "N" Jack Connectors - Cables Sold Separately	√	√	
SMG-1575 - Surface Mount (15ft RG-174 Cable with MALE SMA Plug Connector)			√
Option #2			
Y42700WB-2X (600 - 6000 MHz) - Female "N" Jack Connectors & 1ft Pigtails	√	√	
NTG-1575 - Timing Antenna (FEMALE TNC Jack Connector, Cables Sold Separately)			√

ANTENNA CONNECTION NOTES:

Mounting Options are available for All Models. Jumper cable assemblies are also available from Mobile Mark. We make CUSTOM assemblies using a variety of cables including LMR-400, LL-195, and traditional RG-58. Gateway has a Female SMA Jack. Cable Assembly will be needed with a MALE SMA Plug connector.

Please Note that any combination pairings with GPS/GNSS antennas are interchangeable.

See Omni Options

GATEWAY & ANTENNA

Match-Up Guide

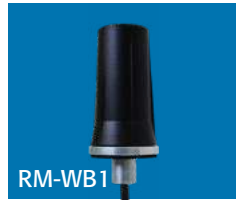
This Guide shows Mobile Mark Omni- Directional Antennas that are COMPATIBLE with your



BulletCAT4-GL Cellular Gateway



LTMG308



RM-WB1



OD3-600/6000



SMG-1575



NTG-1575



PNM2-LTE



MAG-1575



	4G LTE Router 703 - 2690 MHz		GPS/GNSS
Connections:	1	2	3
Option #1			
LTMG308 (617 - 6000 MHz) - Male SMA Plug Connectors - 15ft RG-174 Cables	√	√	√
Option #2			
TWO RM-WB1 Antennas (617- 6000 MHz) - Male SMA Plug Connectors with 1ft LL-195 Cables or Direct "N" Jack	√	√	
NTG-1575 - Timing Antenna (FEMALE TNC Jack Connector, Cables Sold Separately)			√
Option #3			
TWO OD3-600/6000 Antennas (617- 6000 MHz) - Female "N" Jack Connection - Cables Sold Separately	√	√	
SMG-1575 - Surface Mount (15ft RG-174 Cable with MALE SMA Plug Connector)			√
Option #4			
PNM2-LTE (694 - 2700 MHz) - Male SMA Plug Connectors - 1ft RG 58 Cables	√	√	
MAG-1575 - Mag Mount for Vehicle Roof or Trunk (10ft RG-174 Cable with MALE SMA Plug Connector)			√

ANTENNA CONNECTION NOTES:

Mounting Options are available for All Models. Jumper cable assemblies are also available from Mobile Mark. We make CUSTOM assemblies using a variety of cables including LMR-400, LL-195, and traditional RG-58. LTM & RM Series come in mag mount options and LTM also comes as a ceiling mount. Gateway has a Female SMA Jack, Cable Assembly will be needed with a MALE SMA Plug connector.

Please Note that any combination pairings with GPS/GNSS antennas are interchangeable.

See Directional Options

GATEWAY & ANTENNA

Match-Up Guide

This Guide shows Mobile Mark Directional Antennas that are COMPATIBLE with your  **LTECube-CAT4NA2** Cellular Gateway



	4G LTE Router 617 - 2200 MHz		GPS/GNSS
Connections:	1	2	3
Option #1			
SMG-1575 - Surface Mount (15ft RG-174 Cable with MALE SMA Plug Connector)			√
Option #2			
Y42700WB-2X (600 - 6000 MHz) - Female "N" Jack Connector & 1ft Pigtail	√	√	
NTG-1575 - Timing Antenna (FEMALE TNC Jack Connector, Cables Sold Separately)			√

ANTENNA CONNECTION NOTES:
 Mounting Options are available for All Models.
 Jumper cable assemblies are also available from Mobile Mark.
 We make CUSTOM assemblies using a variety of cables including LMR-400, LL-195, and traditional RG-58.
 Gateway has a Female SMA Jack, Cable Assembly will be needed with a MALE SMA Plug connector.

Please Note that any combination pairings with GPS/GNSS antennas are interchangeable.

See Omni Options

GATEWAY & ANTENNA

Match-Up Guide

This Guide shows Mobile Mark Omni- Directional Antennas that are COMPATIBLE with your



LTECube-CAT4NA2 Cellular Gateway



	4G LTE Router 703 - 2690 MHz		GPS/GNSS
Connections:	1	2	3
Option #1			
LTMG302 (694 - 3700 MHz) - Male SMA Plug Connectors - 15ft RG-174 Cables	√	√	√
Option #2			
TWO RM-WB1 Antennas (617- 6000 MHz) - Male SMA Plug Connectors & 1ft LL-195 Cables or Direct "N" Jack	√	√	
NTG-1575 - Timing Antenna (FEMALE TNC Jack Connector, Cables Sold Separately)			√
Option #3			
TWO OD3-600/6000 Antennas (617- 6000 MHz) - Female "N" Jack Connection - Cables Sold Separately	√	√	
SMG-1575 - Surface Mount (15ft RG-174 Cable with MALE SMA Plug Connector)			√
Option #4			
PNM2-LTE (694 - 2700 MHz) - Male SMA Plug Connector - 1ft RG 58 Cable	√	√	
MAG-1575 - Mag Mount for Vehicle Roof or Trunk (10ft RG-174 Cable with MALE SMA Plug Connector)			√

ANTENNA CONNECTION NOTES:

Mounting Options are available for All Models. Jumper cable assemblies are also available from Mobile Mark. We make CUSTOM assemblies using a variety of cables including LMR-400, LL-195, and traditional RG-58. LTM & RM Series come in mag mount options and LTM also comes as a ceiling mount. Gateway has a Female SMA Jack, Cable Assembly will be needed with a MALE SMA Plug connector.

Please Note that any combination pairings with GPS/GNSS antennas are interchangeable.

[See Directional Options](#)

GATEWAY & ANTENNA

Match-Up Guide

This Guide shows Mobile Mark Omni- Directional Antennas that are COMPATIBLE with your



	4G LTE Router 699 - 2690 MHz		2.4 GHz WiFi	GPS
Connections:	1	2	3	4
Option #1				
LTM402-3C3C3J2C (694 - 3700 MHz)- 2x LTE, 1x WiFi, 1x GPS	√	√	√	√
Option #2				
LLP402-3C3C3J2C (694 - 3700 MHz)- 2x LTE, 1x WiFi, 1x GPS	√	√	√	√
Option #3				
MXF402-3C3C3J2C (694 - 3700 MHz)- 2x LTE, 1x WiFi, 1x GPS	√	√	√	√

ANTENNA CONNECTION NOTES:

Cellular Elements Connected with SMA Plugs and LL-195 Cables. WiFi Elements Connected with Rev Pole SMA Plugs and LL-195 Cables. GPS Connected with SMA Plugs and RG-174 Cables. Standard 15 Feet of Cables, But Custom Cable Lengths can be Specified. Mag Mount Models are Available for All three Antennas listed Above! Color Options Include Black or White.