

GATEWAY & ANTENNA

Match-Up Guide

This Guide shows Mobile Mark Antennas that are COMPATIBLE with your **BEC** Routers and Modems.



Module



IoT/M2M



Enterprise



Mobile



GATEWAY & ANTENNA

Match-Up Guide

This Guide shows Mobile Mark Antennas that are COMPATIBLE with your **BEC** **Module** Modems.



MX-100U



MX-100UE



MX-100UG



MX-100U 5G



CVW Series



Y42700WB-2X



LTMWG900 Series



IWG-1575



LLP Series



LTB Series



LTM Series

GATEWAY & ANTENNA

Match-Up Guide

This Guide shows Mobile Mark Antennas that are COMPATIBLE with your



	Cellular 694 - 3700 MHz		GNSS
	1	2	3
Connections:			
Option #1			
LTMG302-3C3C2C (2x 4G/LTE MIMO, 1x GNSS)	√	√	√
Option #2			
LLPG302-3C3C2C (2x 4G/LTE MIMO, 1x GNSS)	√	√	√
Option #3			
LTBG302-3C3C2C (2x 4G/LTE MIMO, 1x GNSS)	√	√	√
Option #4			
CVWG302-2C2C2C (2x 4G/LTE MIMO, 1x GNSS)	√	√	√
Option #5			
Y42700WB-2X (2x 4G/LTE MIMO)	√	√	
IWG-1575-2C (1x GNSS)			√

ANTENNA CONNECTION NOTES:

Cellular antenna elements are attached with LL-195 cable and SMA plug connectors, GNSS antenna elements are attached with RG-174 cable and SMA plug connectors. LTM, LLP, and CVW Series are available in either Black or White. Y42700WB-2X and IWG-1575 are available in Black Only. LTB Series is available in Grey Only.

© 2023 Mobile Mark, Inc.

GATEWAY & ANTENNA

Match-Up Guide

This Guide shows Mobile Mark Antennas that are COMPATIBLE with your



	Cellular 694 - 3700 MHz		GNSS
	1	2	3
Connections:			
Option #1			
LTMG302-3C3C2C (2x 4G/LTE MIMO, 1x GNSS)	√	√	√
Option #2			
LLPG302-3C3C2C (2x 4G/LTE MIMO, 1x GNSS)	√	√	√
Option #3			
LTBG302-3C3C2C (2x 4G/LTE MIMO, 1x GNSS)	√	√	√
Option #4			
CVWG302-2C2C2C (2x 4G/LTE MIMO, 1x GNSS)	√	√	√
Option #5			
Y42700WB-2X (2x 4G/LTE MIMO)	√	√	
IWG-1575-2C (1x GNSS)			√

ANTENNA CONNECTION NOTES:

Cellular antenna elements are attached with LL-195 cable and SMA plug connectors, GNSS antenna elements are attached with RG-174 cable and SMA plug connectors. LTM, LLP, and CVW Series are available in either Black or White. Y42700WB-2X and IWG-1575 are available in Black Only. LTB Series is available in Grey Only.

© 2023 Mobile Mark, Inc.

GATEWAY & ANTENNA

Match-Up Guide

This Guide shows Mobile Mark Antennas that are COMPATIBLE with your



LTMWG900 Series



CVW Series



Y42700WB-2X



IWG-1575



	Cellular 617 - 7200 MHz				GNSS
	Connections:	1	2	3	4
Option #1					
LTMWG940-A3CB3C00G2C (4x 5G LTE MIMO, 1x GNSS)	√	√	√	√	√
Option #2					
CVW308-7C7C2C (2x 5G LTE MIMO, 1x GNSS)	√	√			√
CVW208-7C7C (2x 5G LTE MIMO)			√	√	
Option #3					
Y42700WB-2X (2x 4G/LTE MIMO)	√	√			
Y42700WB-2X (2x 4G/LTE MIMO)			√	√	
IWG-1575-2C (1x GNSS)					√

ANTENNA CONNECTION NOTES:

Cellular antenna elements are attached with LL-195 cable and SMA plug connectors, GNSS antenna elements are attached with RG-174 cable and SMA plug connectors. LTM and CVW Series are available in either Black or White. Y42700WB-2X and IWG-1575 are available in Black Only.

GATEWAY & ANTENNA

Match-Up Guide

This Guide shows Mobile Mark Antennas that are COMPATIBLE with your



LTMWG900 Series



CVW Series



Y42700WB-2X



IWG-1575



	Cellular 617 - 7200 MHz				
	Connections:	1	2	3	4
Option #1					
LTMWG940-A3CB3C00G2C (4x 5G LTE MIMO, 1x GNSS)		√	√	√	√
Option #2					
CVW308-7C7C2C (2x 5G LTE MIMO, 1x GNSS)		√	√		
CVW208-7C7C (2x 5G LTE MIMO)				√	√
Option #3					
Y42700WB-2X (2x 5G/LTE MIMO)		√	√		
Y42700WB-2X (2x 5G/LTE MIMO)				√	√
IWG-1575-2C (1x GNSS)					

ANTENNA CONNECTION NOTES:

Cellular antenna elements are attached with LL-195 cable and SMA plug connectors, GNSS antenna elements are attached with RG-174 cable and SMA plug connectors. LTM and CVW Series are available in either Black or White. Y42700WB-2X and IWG-1575 are available in Black Only.

GATEWAY & ANTENNA

Match-Up Guide

This Guide shows Mobile Mark Antennas that are COMPATIBLE with your



GATEWAY & ANTENNA

Match-Up Guide

This Guide shows Mobile Mark Antennas that are COMPATIBLE with your



	Cellular 694 - 3700 MHz		GNSS
	1	2	3
Connections:	1	2	3
Option #1			
LTMG302-3C3C2C (2x 4G/LTE MIMO, 1x GNSS)	√	√	√
Option #2			
LLPG302-3C3C2C (2x 4G/LTE MIMO, 1x GNSS)	√	√	√
Option #3			
LTBG302-3C3C2C (2x 4G/LTE MIMO, 1x GNSS)	√	√	√
Option #4			
CVWG302-2C2C2C (2x 4G/LTE MIMO, 1x GNSS)	√	√	√
Option #5			
Y42700WB-2X (2x 4G/LTE MIMO)	√	√	
IWG-1575-2C (1x GNSS)			√

ANTENNA CONNECTION NOTES:

Cellular antenna elements are attached with LL-195 cable and SMA plug connectors, GNSS antenna elements are attached with RG-174 cable and SMA plug connectors. LTM, LLP, and CVW Series are available in either Black or White. Y42700WB-2X and IWG-1575 are available in Black Only. LTB Series is available in Grey Only.

© 2023 Mobile Mark, Inc.

GATEWAY & ANTENNA

Match-Up Guide

This Guide shows Mobile Mark Antennas that are COMPATIBLE with your



	Cellular 694 - 3700 MHz		GNSS
	1	2	3
Connections:	1	2	3
Option #1			
LTMG302-3C3C2C (2x 4G/LTE MIMO, 1x GNSS)	√	√	√
Option #2			
LLPG302-3C3C2C (2x 4G/LTE MIMO, 1x GNSS)	√	√	√
Option #3			
LTBG302-3C3C2C (2x 4G/LTE MIMO, 1x GNSS)	√	√	√
Option #4			
CVWG302-2C2C2C (2x 4G/LTE MIMO, 1x GNSS)	√	√	√
Option #5			
Y42700WB-2X (2x 4G/LTE MIMO)	√	√	
IWG-1575-2C (1x GNSS)			√

ANTENNA CONNECTION NOTES:

Cellular antenna elements are attached with LL-195 cable and SMA plug connectors, GNSS antenna elements are attached with RG-174 cable and SMA plug connectors. LTM, LLP, and CVW Series are available in either Black or White. Y42700WB-2X and IWG-1575 are available in Black Only. LTB Series is available in Grey Only.

GATEWAY & ANTENNA

Match-Up Guide

This Guide shows Mobile Mark Antennas that are COMPATIBLE with your



	Cellular 694 - 3700 MHz		GNSS
	1	2	3
Connections:	1	2	3
Option #1			
LTMG302-3C3C2C (2x 4G/LTE MIMO, 1x GNSS)	√	√	√
Option #2			
LLPG302-3C3C2C (2x 4G/LTE MIMO, 1x GNSS)	√	√	√
Option #3			
LTBG302-3C3C2C (2x 4G/LTE MIMO, 1x GNSS)	√	√	√
Option #4			
CVWG302-2C2C2C (2x 4G/LTE MIMO, 1x GNSS)	√	√	√
Option #5			
Y42700WB-2X (2x 4G/LTE MIMO)	√	√	
IWG-1575-2C (1x GNSS)			√

ANTENNA CONNECTION NOTES:

Cellular antenna elements are attached with LL-195 cable and SMA plug connectors, GNSS antenna elements are attached with RG-174 cable and SMA plug connectors. LTM, LLP, and CVW Series are available in either Black or White. Y42700WB-2X and IWG-1575 are available in Black Only. LTB Series is available in Grey Only.

GATEWAY & ANTENNA

Match-Up Guide

This Guide shows Mobile Mark Antennas that are COMPATIBLE with your



	Cellular 617 - 7200 MHz				GNSS
	Connections:	1	2	3	4
Option #1					
LTMWG940-A3CB3C002C (4x 5G LTE MIMO, 1x GNSS)	√	√	√	√	√
Option #2					
BPNG940-3C002C (2x 5G LTE MIMO, 1x GNSS)	√	√			√
Option #3					
CVWG308-7C7C2C (2x 5G LTE MIMO, 1x GNSS)	√	√			√
CVW208-7C7C (2x 5G LTE MIMO)			√	√	
Option #4					
Y42700WB-2X (2x 5G LTE MIMO)	√	√			
Y42700WB-2X (2x 5G LTE MIMO)			√	√	
IWG-1575-2C (1x GNSS)					√

ANTENNA CONNECTION NOTES:

Cellular antenna elements are attached with LL-195 cable and SMA plug connectors, GNSS antenna elements are attached with RG-174 cable and SMA plug connectors. LTM and CVW Series are available in either Black or White. Y42700WB-2X and IWG-1575 are available in Black Only. BPN Series is available in White Only.

GATEWAY & ANTENNA

Match-Up Guide

This Guide shows Mobile Mark Antennas that are COMPATIBLE with your



	Cellular 699 - 2170 MHz	GNSS
Connections:	1	2
Option #1		
RM-WLF (1x 4G/LTE)	√	
SMG-1575-2C (1x GNSS)		√
Option #2		
LTBG302-3C002C (1x 4G/LTE, 1x GNSS)	√	√
Option #3		
LLPG302-3C002C (1x 4G/LTE, 1x GNSS)	√	√
Option #4		
LTMG302-3C002C (1x 4G/LTE, 1x GNSS)	√	√

ANTENNA CONNECTION NOTES:

Cellular antenna elements are attached with LL-195 cable and SMA plug connectors, GNSS antenna elements are attached with RG-174 cable and SMA plug connectors. RM, LLP, and LTM Series are available in either Black or White. SMG Series is available in White Only. LTB Series is available in Grey Only.

GATEWAY & ANTENNA

Match-Up Guide

This Guide shows Mobile Mark Antennas that are COMPATIBLE with your



	Cellular 3400 - 3800 MHz				
	Connections:	1	2	3	4
Option #1					
LTMG940-A3CB3C0000 (4x 4G/LTE MIMO)		√	√	√	√
Option #2					
BPN940-3C0000 (4x 4G/LTE MIMO)		√	√	√	√
Option #3					
CVW208-7C7C (2x 4G/LTE MIMO)		√	√		
CVW208-7C7C (2x 4G/LTE MIMO)				√	√
Option #4					
Y42700WB-2X (2x 4G/LTE MIMO)		√	√		
Y42700WB-2X (2x 4G/LTE MIMO)				√	√

ANTENNA CONNECTION NOTES:

Cellular antenna elements attached with LL-195 cable and SMA plug connectors.

LTM and CVW Series are available in either Black or White. Y42700WB-2X is available in Black Only. BPN Series is available in White Only.

GATEWAY & ANTENNA

Match-Up Guide

This Guide shows Mobile Mark Antennas that are COMPATIBLE with your



	Cellular 617 - 7200 MHz				GNSS
	Connections:	1	2	3	4
Option #1					
LTMWG940-A3CB3C002C (4x 5G LTE MIMO, 1x GNSS)	√	√	√	√	√
Option #2					
BPNG940-3C002C (2x 5G LTE MIMO, 1x GNSS)	√	√			√
Option #3					
CVWG308-7C7C2C (2x 5G LTE MIMO, 1x GNSS)	√	√			√
CVW208-7C7C (2x 5G LTE MIMO)			√	√	
Option #4					
Y42700WB-2X (2x 5G LTE MIMO)	√	√			
Y42700WB-2X (2x 5G LTE MIMO)			√	√	
IWG-1575-2C (1x GNSS)					√

ANTENNA CONNECTION NOTES:

Cellular antenna elements attached with LL-195 cable and SMA plug connectors.

LTM and CVW Series are available in either Black or White. Y42700WB-2X and IWG are available in Black Only. BPN Series is available in White Only.

GATEWAY & ANTENNA

Match-Up Guide

This Guide shows Mobile Mark Antennas that are COMPATIBLE with your **BEC** **Enterprise** Routers and Modems.



Enterprise Routers and Modems.



MX-210NP R7-Q



MX-210NP R17



MX-210NP R17-AF



MX-221P



MX-241NP



MX-600 for MX-100UG



MX-1200 for MX-100UG



MX-600 for MX-100U 5G



MX-1200 for MX-100U 5G



6500AEL R18



6500AEL R21



6600AEL R24



CVW Series



Y42700WB-2X



LTMWG900 Series



IWG-1575



LLP Series



BPN Series



LTM Series

GATEWAY & ANTENNA

Match-Up Guide

This Guide shows Mobile Mark Antennas that are COMPATIBLE with your



	Cellular 694 - 3700 MHz		GNSS
Connections:	1	2	3
Option #1			
LTMG302-3C3C2C (2x 4G/LTE MIMO, 1x GNSS)	√	√	√
Option #2			
LLPG302-3C3C2C (2x 4G/LTE MIMO, 1x GNSS)	√	√	√
Option #3			
BPNG940-3C002C (2x 4G/LTE MIMO, 1x GNSS)	√	√	√
Option #4			
CVWG302-2C2C2C (2x 4G/LTE MIMO, 1x GNSS)	√	√	√
Option #5			
Y42700WB-2X (2x 4G/LTE MIMO)	√	√	
IWG-1575-2C (1x GNSS)			√

ANTENNA CONNECTION NOTES:

Cellular antenna elements are attached with LL-195 cable and SMA plug connectors, GNSS antenna elements are attached with RG-174 cable and SMA plug connectors. LTM, LLP, and CVW Series are available in either Black or White. Y42700WB-2X and IWG-1575 are available in Black Only. BPN Series is available in White Only.

GATEWAY & ANTENNA

Match-Up Guide

This Guide shows Mobile Mark Antennas that are COMPATIBLE with your



	Cellular 694 - 3700 MHz		GNSS
	1	2	3
Connections:	1	2	3
Option #1			
LTMG302-3C3C2C (2x 4G/LTE MIMO, 1x GNSS)	√	√	√
Option #2			
LLPG302-3C3C2C (2x 4G/LTE MIMO, 1x GNSS)	√	√	√
Option #3			
BPNG940-3C002C (2x 4G/LTE MIMO, 1x GNSS)	√	√	√
Option #4			
CVWG302-2C2C2C (2x 4G/LTE MIMO, 1x GNSS)	√	√	√
Option #5			
Y42700WB-2X (2x 4G/LTE MIMO)	√	√	
IWG-1575-2C (1x GNSS)			√

ANTENNA CONNECTION NOTES:

Cellular antenna elements are attached with LL-195 cable and SMA plug connectors, GNSS antenna elements are attached with RG-174 cable and SMA plug connectors. LTM, LLP, and CVW Series are available in either Black or White. Y42700WB-2X and IWG-1575 are available in Black Only. BPN Series is available in White Only.

GATEWAY & ANTENNA

Match-Up Guide

This Guide shows Mobile Mark Antennas that are COMPATIBLE with your



	Cellular 694 - 3700 MHz		GNSS
	1	2	3
Connections:	1	2	3
Option #1			
LTMG302-3C3C2C (2x 4G/LTE MIMO, 1x GNSS)	√	√	√
Option #2			
LLPG302-3C3C2C (2x 4G/LTE MIMO, 1x GNSS)	√	√	√
Option #3			
BPNG940-3C002C (2x 4G/LTE MIMO, 1x GNSS)	√	√	√
Option #4			
CVWG302-2C2C2C (2x 4G/LTE MIMO, 1x GNSS)	√	√	√
Option #5			
Y42700WB-2X (2x 4G/LTE MIMO)	√	√	
IWG-1575-2C (1x GNSS)			√

ANTENNA CONNECTION NOTES:

Cellular antenna elements are attached with LL-195 cable and SMA plug connectors, GNSS antenna elements are attached with RG-174 cable and SMA plug connectors. LTM, LLP, and CVW Series are available in either Black or White. Y42700WB-2X and IWG-1575 are available in Black Only. BPN Series is available in White Only.

GATEWAY & ANTENNA

Match-Up Guide

This Guide shows Mobile Mark Antennas that are COMPATIBLE with your



	Cellular 694 - 3700 MHz		GNSS
	1	2	3
Connections:	1	2	3
Option #1			
LTMG302-3C3C2C (2x 4G/LTE MIMO, 1x GNSS)	√	√	√
Option #2			
LLPG302-3C3C2C (2x 4G/LTE MIMO, 1x GNSS)	√	√	√
Option #3			
BPNG940-3C002C (2x 4G/LTE MIMO, 1x GNSS)	√	√	√
Option #4			
CVWG302-7C7C2C (2x 4G/LTE MIMO, 1x GNSS)	√	√	√
Option #5			
Y42700WB-2X (2x 4G/LTE MIMO)	√	√	
IWG-1575-2C (1x GNSS)			√

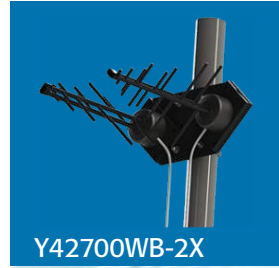
ANTENNA CONNECTION NOTES:

Cellular antenna elements are attached with LL-195 cable and SMA plug connectors, GNSS antenna elements are attached with RG-174 cable and SMA plug connectors. LTM, LLP, and CVW Series are available in either Black or White. Y42700WB-2X and IWG-1575 are available in Black Only. BPN Series is available in White Only.

GATEWAY & ANTENNA

Match-Up Guide

This Guide shows Mobile Mark Antennas that are COMPATIBLE with your



	Cellular 694 - 3700 MHz	
Connections:	1	2
Option #1		
LTM202-3C3C (2x 4G/LTE MIMO)	√	√
Option #2		
LLP202-3C3C (2x 4G/LTE MIMO)	√	√
Option #3		
BPN920-3C0000 (2x 4G/LTE MIMO)	√	√
Option #4		
CVW208-7C7C (2x 4G/LTE MIMO)	√	√
Option #5		
Y42700WB-2X (2x 4G/LTE MIMO)	√	√

ANTENNA CONNECTION NOTES:

Cellular antenna elements are attached with LL-195 cable and SMA plug connectors.

LTM, LLP, and CVW Series are available in either Black or White. Y42700WB-2X is available in Black Only. BPN Series is available in White Only.

GATEWAY & ANTENNA

Match-Up Guide

This Guide shows Mobile Mark Antennas that are COMPATIBLE with your



MX-600 Router for **MX100UG**



	Cellular 694 - 3700 MHz				WiFi 2.4 - 2.5 & 4.9 - 6 GHz		GNSS	
	Connections:	1	2	3	4	5	6	7
Option #1								
LTMG942-A3CB3CW3JG2C (4x 4G/LTE MIMO, 2x WiFi, 1x GNSS)	√	√	√	√	√	√	√	√
Option #2								
LTMG940-A3CB3C00G2C (4x 4G/LTE MIMO, 1x GNSS)	√	√	√	√				√
Option #3								
BPN942-3C3J2C (4x 4G/LTE MIMO, 2x WiFi, 1x GNSS)	√	√	√	√	√	√	√	√
Option #4								
BPN940-3C002C (4x 4G/LTE MIMO, 1x GNSS)	√	√	√	√				√
Option #5								
CVWG502-2C2C2J2J2C (2x 4G/LTE MIMO, 2x WiFi, 1x GNSS)	√	√				√	√	√
CVW202-2C2C (2x 4G/LTE MIMO)			√	√				
Option #6								
Two Y42700WB-2X (2x 4G/LTE MIMO)	√	√	√	√				

ANTENNA CONNECTION NOTES:

Cellular and WiFi antenna elements attached with LL-195 cable, GNSS antenna elements are attached with RG-174 cable. Cellular and GNSS cables are attached with SMA plug connectors, WiFi cables are attached with RP-SMA plug connectors. LTM and CVW Series are available in either Black or White. Y42700WB-2X is available in Black Only. BPN Series is available in White Only.

GATEWAY & ANTENNA

Match-Up Guide

This Guide shows Mobile Mark Antennas that are COMPATIBLE with your



MX-1200 Router for **MX100UG**



	Cellular 694 - 3700 MHz				WiFi 2.4 - 2.5 & 4.9 - 6 GHz		GNSS	
	Connections:	1	2	3	4	5	6	7
Option #1								
LTMG942-A3CB3CW3JG2C (4x 4G/LTE MIMO, 2x WiFi, 1x GNSS)	√	√	√	√	√	√	√	√
Option #2								
LTMG940-A3CB3C00G2C (4x 4G/LTE MIMO, 1x GNSS)	√	√	√	√				√
Option #3								
BPN942-3C3J2C (4x 4G/LTE MIMO, 2x WiFi, 1x GNSS)	√	√	√	√	√	√	√	√
Option #4								
BPN940-3C002C (4x 4G/LTE MIMO, 1x GNSS)	√	√	√	√				√
Option #5								
CVWG502-2C2C2J2J2C (2x 4G/LTE MIMO, 2x WiFi, 1x GNSS)	√	√				√	√	√
CVW502-2C2C2J2J00 (2x 4G/LTE MIMO)			√	√				
Option #6								
Two Y42700WB-2X (2x 4G/LTE MIMO)	√	√	√	√				

ANTENNA CONNECTION NOTES:

Cellular and WiFi antenna elements attached with LL-195 cable, GNSS antenna elements are attached with RG-174 cable. Cellular and GNSS cables are attached with SMA plug connectors, WiFi cables are attached with RP-SMA plug connectors. LTM and CVW Series are available in either Black or White. Y42700WB-2X is available in Black Only. BPN Series is available in White Only.

GATEWAY & ANTENNA

Match-Up Guide

This Guide shows Mobile Mark Antennas that are COMPATIBLE with your



MX-600 Router for **MX-100U 5G**



LTMWG900 Series



BPN Series



CVW Series



Y42700WB-2X



	Cellular 694 - 3700 MHz				WiFi 2.4 - 2.5 & 4.9 - 6 GHz		GNSS	
	Connections:	1	2	3	4	5	6	7
Option #1								
LTMWG942-A3CB3CW3JG2C (4x 5G LTE MIMO, 2x WiFi 6E, 1x GNSS)	√	√	√	√	√	√	√	√
Option #2								
LTMWG940-A3CB3C00G2C (4x 5G LTE MIMO, 1x GNSS)	√	√	√	√				√
Option #3								
BPN942-3C3J2C (4x 5G LTE MIMO, 2x WiFi, 1x GNSS)	√	√	√	√	√	√	√	√
Option #4								
BPN940-3C002C (4x 5G LTE MIMO, 1x GNSS)	√	√	√	√				√
Option #5								
CVWG508-7C7C7J7J2C (2x 5G LTE MIMO, 2x WiFi, 1x GNSS)	√	√				√	√	√
CVW208-7C7C (2x 5G LTE MIMO)			√	√				
Option #6								
Two Y42700WB-2X (2x 4G/LTE MIMO)	√	√	√	√				

ANTENNA CONNECTION NOTES:

Cellular and WiFi antenna elements attached with LL-195 cable, GNSS antenna elements are attached with RG-174 cable. Cellular and GNSS cables are attached with SMA plug connectors, WiFi cables are attached with RP-SMA plug connectors. LTM and CVW Series are available in either Black or White. Y42700WB-2X is available in Black Only. BPN Series is available in White Only.

GATEWAY & ANTENNA

Match-Up Guide

This Guide shows Mobile Mark Antennas that are COMPATIBLE with your



MX-1200 Router for **MX-100U 5G**



	Cellular 694 - 3700 MHz				WiFi 2.4 - 2.5 & 4.9 - 6 GHz		GNSS	
	Connections:	1	2	3	4	5	6	7
Option #1								
LTMWG942-A3CB3CW3JG2C (4x 5G LTE MIMO, 2x WiFi 6E, 1x GNSS)	√	√	√	√	√	√	√	√
Option #2								
LTMWG940-A3CB3C00G2C (4x 5G LTE MIMO, 1x GNSS)	√	√	√	√				√
Option #3								
BPN942-3C3J2C (4x 5G LTE MIMO, 2x WiFi, 1x GNSS)	√	√	√	√	√	√	√	√
Option #4								
BPN940-3C002C (4x 5G LTE MIMO, 1x GNSS)	√	√	√	√				√
Option #5								
CVWG508-7C7C7J7J2C (2x 5G LTE MIMO, 2x WiFi, 1x GNSS)	√	√			√	√	√	√
CVW508-7C7C7J7J00 (2x 5G LTE MIMO)			√	√				
Option #6								
Two Y42700WB-2X (2x 4G/LTE MIMO)	√	√	√	√				

ANTENNA CONNECTION NOTES:

Cellular and WiFi antenna elements attached with LL-195 cable, GNSS antenna elements are attached with RG-174 cable. Cellular and GNSS cables are attached with SMA plug connectors, WiFi cables are attached with RP-SMA plug connectors. LTM and CVW Series are available in either Black or White. Y42700WB-2X is available in Black Only. BPN Series is available in White Only.

© 2023 Mobile Mark, Inc.

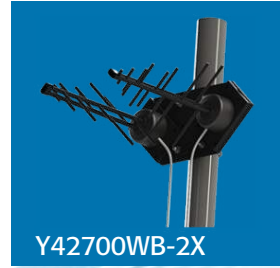
GATEWAY & ANTENNA

Match-Up Guide

This Guide shows Mobile Mark Antennas that are COMPATIBLE with your



6500AEL R18 Modem



	Cellular 694 - 3700 MHz		WiFi 2.4 - 2.5 & 4.9 - 6 GHz	
	1	2	3	4
Connections:				
Option #1				
LTM502-3C3C3J3J00 (2x 4G/LTE MIMO, 2x WiFi)	√	√	√	√
Option #2				
LLP502-3C3C3J3J00 (2x 4G/LTE MIMO, 2x WiFi)	√	√	√	√
Option #3				
BPN922-3C3J00 (1x 4G/LTE MIMO, 1x WiFi)	√		√	
Option #4				
CVW508-7C7C7J7J00 (2x 4G/LTE MIMO, 2x WiFi)	√	√	√	√
Option #5				
Y42700WB-2X (2x 4G/LTE MIMO)	√	√		

ANTENNA CONNECTION NOTES:

Cellular and WiFi antenna elements attached with LL-195 cable. Cellular cables are attached with SMA plug connectors, WiFi cables are attached with RP-SMA plug connectors. LTM, LLP, and CVW Series are available in either Black or White. Y42700WB-2X is available in Black Only. BPN Series is available in White Only.

GATEWAY & ANTENNA

Match-Up Guide

This Guide shows Mobile Mark Antennas that are COMPATIBLE with your



6500AEL R21 Router



	Cellular 694 - 3700 MHz				WiFi 2.4 - 2.5 & 4.9 - 6 GHz	
	1	2	3	4	5	6
Connections:						
Option #1						
LTMG944-A3CB3CW3JG00 (4x 4G/LTE MIMO, 2x WiFi)	√	√	√	√	√	√
Option #2						
BPN942-3C3J00 (4x 4G/LTE MIMO, 2x WiFi)	√	√	√	√		
Option #3						
CVW508-7C7C7J7J00 (2x 4G/LTE MIMO, 2x WiFi)	√	√			√	√
CVW508-7C7C7J7J00 (2x 4G/LTE MIMO)			√	√		
Option #4						
Y42700WB-2X (2x 4G/LTE MIMO)	√	√				
Y42700WB-2X (2x 4G/LTE MIMO)			√	√		

ANTENNA CONNECTION NOTES:

Cellular and WiFi antenna elements attached with LL-195 cable. Cellular cables are attached with SMA plug connectors, WiFi cables are attached with RP-SMA plug connectors. LTM, LLP, and CVW Series are available in either Black or White. Y42700WB-2X is available in Black Only. BPN Series is available in White Only.

GATEWAY & ANTENNA

Match-Up Guide

This Guide shows Mobile Mark Antennas that are COMPATIBLE with your



6600AEL R24 Router



LTMWG900 Series



BPN Series



CVW Series



Y42700WB-2X



	Cellular 617 - 7200 MHz				WiFi 2.4 - 2.5 & 4.9 - 7.2 GHz	
	1	2	3	4	5	6
Connections:						
Option #1						
LTMWG944-A3CB3CW3JG00 (4x 4G/LTE MIMO, 4x WiFi 6E)	√	√	√	√	√	√
Option #2						
BPN942-3C3J00 (4x 4G/LTE MIMO, 2x WiFi)	√	√	√	√		
Option #3						
CVW508-7C7C7J7J00 (2x 4G/LTE MIMO, 2x WiFi)	√	√			√	√
CVW508-7C7C7J7J00 (2x 4G/LTE MIMO)			√	√		
Option #4						
Y42700WB-2X (2x 4G/LTE MIMO)	√	√				
Y42700WB-2X (2x 4G/LTE MIMO)			√	√		

ANTENNA CONNECTION NOTES:

Cellular and WiFi antenna elements attached with LL-195 cable. Cellular cables are attached with SMA plug connectors, WiFi cables are attached with RP-SMA plug connectors. LTM and CVW Series are available in either Black or White. Y42700WB-2X is available in Black Only. BPN Series is available in White Only.

GATEWAY & ANTENNA

Match-Up Guide

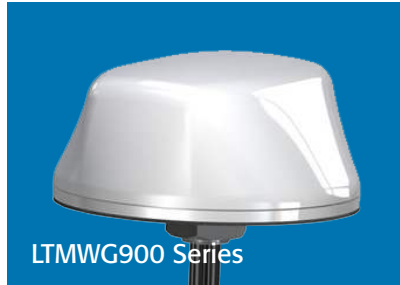
This Guide shows Mobile Mark Antennas that are COMPATIBLE with your **BEC** **Mobile** Routers.



GATEWAY & ANTENNA

Match-Up Guide

This Guide shows Mobile Mark Antennas that are COMPATIBLE with your



Connections:	Cellular 617 - 7200 MHz				WiFi 2.4 - 2.5 & 4.9 - 6 GHz				GNSS
	1	2	3	4	5	6	7	8	
Option #1									
LTMWG944-A3CB3CW3JG2C (4x 5G LTE MIMO, 4x WiFi, 1x GNSS)	√	√	√	√	√	√	√	√	√
Option #2									
LTMWG940-A3CB3C00G2C (4x 5G LTE MIMO, 1x GNSS)	√	√	√	√					√

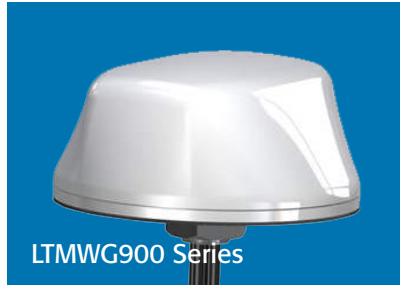
ANTENNA CONNECTION NOTES:

Cellular and WiFi antenna elements attached with LL-195 cable, GNSS antenna elements are attached with RG-174 cable. Cellular and GNSS cables are attached with SMA plug connectors, WiFi cables are attached with RP-SMA plug connectors. LTM Series is available in either Black or White.

GATEWAY & ANTENNA

Match-Up Guide

This Guide shows Mobile Mark Antennas that are COMPATIBLE with your



Connections:	Cellular 617 - 7200 MHz				WiFi 2.4 - 2.5 & 4.9 - 6 GHz				GNSS
	1	2	3	4	5	6	7	8	9
Option #1									
LTMWG944-A3HAB3HAW3HVG2HC (4x 5G LTE MIMO, 4x WiFi 6E, 1x GNSS)	√	√	√	√	√	√	√	√	√
Option #2 - NFPA130									
PR-LTMWG944-A3HAB3HAW3HVG2HC (4x 5G LTE MIMO, 4x WiFi 6E, 1x GNSS)	√	√	√	√	√	√	√	√	√
Option #3									
LTMWG940-A3HAB3HA00G2HC (4x 5G LTE MIMO, 1x GNSS)	√	√	√	√					√
Option #4 - NFPA130									
PR-LTMWG940-A3HAB3HA00G2HC (4x 5G LTE MIMO, 1x GNSS)	√	√	√	√					√

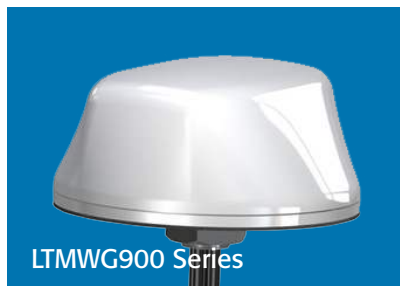
ANTENNA CONNECTION NOTES:

Cellular and WiFi antenna elements attached with LL-195 cable, GNSS antenna elements are attached with RG-174 cable. Cellular cables are attached with SMA plug connectors, WiFi cables are attached with RP-SMA plug connectors, and GNSS cables are attached with Fakra connectors. LTM Series is available in either Black or White.

GATEWAY & ANTENNA

Match-Up Guide

This Guide shows Mobile Mark Antennas that are COMPATIBLE with your



Connections:	Cellular 617 - 7200 MHz				WiFi 2.4 - 2.5 & 4.9 - 6 GHz				GNSS
	1	2	3	4	5	6	7	8	9
Option #1									
LTMWG944-ACB3CW3JG2C (4x 5G LTE MIMO, 4x WiFi 6E, 1x GNSS)	√	√	√	√	√	√	√	√	√
Option #2 - NFPA130									
PR-LTMWG944-ACB3CW3JG2C (4x 5G LTE MIMO, 4x WiFi 6E, 1x GNSS)	√	√	√	√	√	√	√	√	√
Option #3									
LTMWG940-ACB3CW3JG2C (4x 5G LTE MIMO, 1x GNSS)	√	√	√	√					√
Option #4 - NFPA130									
PR-LTMWG940-ACB3CW3JG2C (4x 5G LTE MIMO, 1x GNSS)	√	√	√	√					√

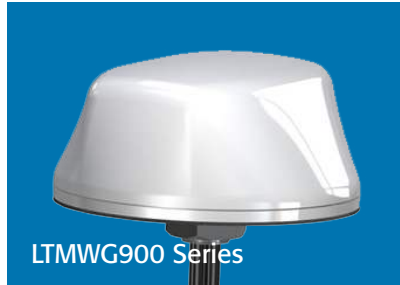
ANTENNA CONNECTION NOTES:

Cellular and WiFi antenna elements attached with LL-195 cable, GNSS antenna elements are attached with RG-174 cable. Cellular and GNSS cables are attached with SMA plug connectors, WiFi cables are attached with RP-SMA plug connectors. LTM Series is available in either Black or White.

GATEWAY & ANTENNA

Match-Up Guide

This Guide shows Mobile Mark Antennas that are COMPATIBLE with your



	Cellular 617 - 7200 MHz				WiFi 2.4 - 2.5 & 4.9 - 6 GHz				GNSS
	1	2	3	4	5	6	7	8	
Connections:									
Option #1									
LTMWG944-A3HAB3HAW3HVG2HC (4x 5G LTE MIMO, 4x WiFi 6E, 1x GNSS)	√	√	√	√	√	√	√	√	√
Option #2 - NFPA130									
PR-LTMWG944-A3HAB3HAW3HVG2HC (4x 5G LTE MIMO, 4x WiFi 6E, 1x GNSS)	√	√	√	√	√	√	√	√	√
Option #3									
LTMWG940-A3HAB3HA00G2HC (4x 5G LTE MIMO, 1x GNSS)	√	√	√	√					√
Option #4 - NFPA130									
PR-LTMWG940-A3HAB3HA00G2HC (4x 5G LTE MIMO, 1x GNSS)	√	√	√	√					√

ANTENNA CONNECTION NOTES:

Cellular and WiFi antenna elements attached with LL-195 cable, GNSS antenna elements are attached with RG-174 cable. Cellular cables are attached with SMA plug connectors, WiFi cables are attached with RP-SMA plug connectors, and GNSS cables are attached with Fakra connectors. LTM Series is available in either Black or White.