



# keonn

Modular RFID  
Components

## AdvanReader-160™ 4 port RFID UHF reader





### Benefits:

- High-performance: high output power and high sensitivity
- Highest flexibility: on-board microcomputer
- Fully open Linux OS
- Reduces time and cost of developing RFID systems
- You can make it your own reader by putting your company logo on the enclosure
- Can control up to 1024 antennas by using it in combination with AdvanMux multiplexer
- Direct connection to an external loudspeaker
- 2 digital/analog inputs
- 8 digital outputs

### Applications:

- Smart shelves
- Smart display fixtures
- Smart surfaces
- RFID portals
- RFID tunnels
- Point of Sales
- Loss prevention systems
- In general, any RFID application

### Product overview

**AdvanReader-160** is a high power (31.5 dBm), four port, high performance UHF reader with an on-board microcomputer and a fully open Linux operating system.

Thanks to its on-board microcomputer, AdvanReader-160 can **work stand-alone**, without needing to be connected to an external computer, thereby reducing equipment costs, installation costs, and maintenance costs.

AdvanReader-160 is prepared to work with **batteries** and control the battery level. It has a sleep mode for minimizing consumption. It is therefore ideal for mobile systems.

### Additional product features

AdvanReader-160 can become **your own reader**: your company logo can be the only logo on the enclosure.

A single AdvanReader-160 unit **can control up to 1024 antennas** when connected to Keonn multiplexers.

AdvanReader-160 is also very flexible in terms of **inputs** and **outputs**:

- 2 x digital/analog inputs
- 2 x additional digital inputs
- 8 x digital outputs
- 4 x Direct LED connections (100 mA)
- 4 x GPO (lines 8 mA)
- 1 x relay enabled output
- Loudspeaker: 8 ohm/2 W
- 2 x RJ45 to directly connect to other Keonn devices, such as AdvanMux and AdvanPhaser

AdvanReader-160 includes several **sensors**, **actuators** and **indicators** on-board:

- Aux Power Supply Voltage
- PoE Power Supply Temperature
- Aux Power Supply Temperature
- On-board buzzer
- On-board LED indicators for: power on, Ethernet linked, Ethernet activity, serial data in, serial data out, etc.

AdvanReader-160 comes with a comprehensive set of built-in HW/SW communication options:

- USB HID emulation: allows generating keyboard events based on Reader events.
- HTTP: user-configurable HTTP request generation based on Reader events.
- MQTT: user-configurable MQTT packet generation based on Reader events.
- SQL: user-configurable SQL sentence generation based on Reader events.
- TCP: real-time TCP socket of Reader events.

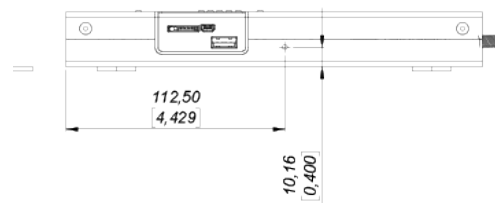
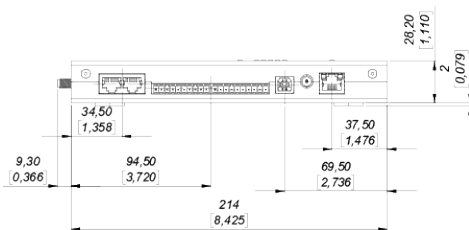
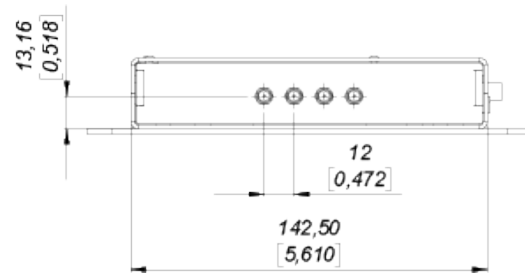
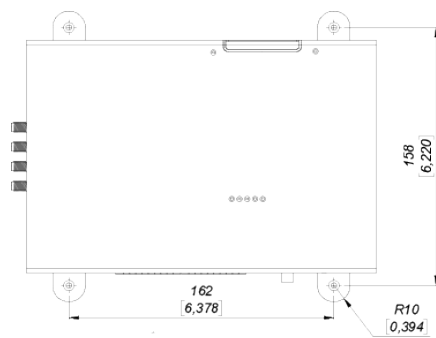
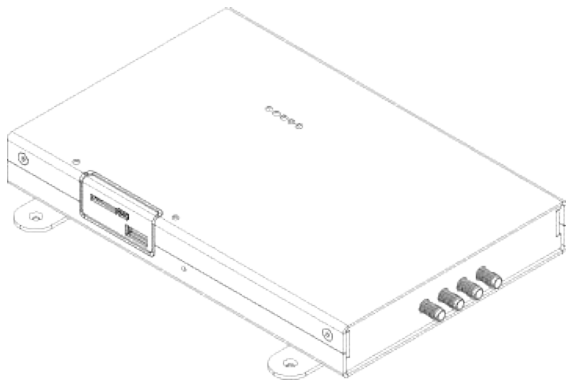


### Electrical, communication and mechanical specifications



Data communications	<ul style="list-style-type: none"> <li>EEthernet: IEEE 802.3 up to 100 Mbps</li> <li>Ethernet over USB (USB mini Type-B connector)</li> <li>USB HID (USB Type-B connector)-USB HID hardware emulation</li> </ul>
Other ports	<ul style="list-style-type: none"> <li>USB (Type-A) Host</li> <li>Accepts USB memory sticks</li> <li>Accepts USB Wi-Fi dongle</li> <li>Etc</li> </ul>
Power supply	<ul style="list-style-type: none"> <li>Power Over Ethernet (PoE): IEEE 802.3af and 802.3at (Type I &amp; Type II)</li> <li>Power consumption: Class 3</li> <li>Power supply from 11 to 24 V (DC)</li> <li>11 V (DC) @ 2 A</li> <li>24 V (DC) @ 1 A</li> <li>On-board battery for RTC chip (CR2032)</li> </ul>
Output power	5 V @ 100 mA non-isolated power supply to feed external devices and circuitry
On-board sensors and actuators	<ul style="list-style-type: none"> <li>Buzzer</li> <li>Aux Power Supply Voltage</li> <li>Aux Power Supply Temperature</li> <li>5 Vcc Voltage</li> <li>Power consumption</li> <li>IN1 Voltage</li> <li>IN2 Voltage</li> <li>RTC chip to keep Date and Time between reboots. Battery life timemore than 10 years in power off mode.</li> </ul>
On-board LED indicators	<ul style="list-style-type: none"> <li>LED ON (Blue LED)</li> <li>LED status (Orange LED)</li> <li>LED M6e Rx line (Green LED)</li> <li>LED M6e Tx line (Red LED)</li> <li>LED Micro Status (Green LED)</li> </ul>
Inputs	<ul style="list-style-type: none"> <li>2 x digital inputs (IN3 and IN4)</li> <li>Non isolated</li> <li>0 V (DC) – 30 V (DC)</li> <li>2 x digital/analog inputs, 10 bits resolution</li> <li>Inputs accepted in the range:</li> <li>0 V – 3 V (IN 1)</li> <li>0 V – 10 V (IN 2)</li> </ul>
Outputs	<ul style="list-style-type: none"> <li>4 x digital outputs (higher power):</li> <li>Non isolated</li> <li>Maximum output current 100mA</li> <li>4 x digital outputs (low power):</li> <li>Non isolated</li> <li>Maximum output current 8 mA</li> <li>1 x Relay output (24 VDC / 0.5 A)</li> <li>Other outputs :</li> <li>Loudspeaker : 8 ohm/2 W</li> <li>2 x RJ45 to directly connect to other Keonn devices, such as Advan-Mux and AdvanPhaser</li> </ul>
Power consumption	<ul style="list-style-type: none"> <li>Idle consumption &lt; 3 W</li> <li>Max consumption (@31.5 dBm) &lt; 14 W</li> </ul>
Temperature	<ul style="list-style-type: none"> <li>Operating temperature: -20 °C to +40 °C</li> <li>Storage temperature: -30 °C to +60 °C</li> </ul>
Humidity	20 % to 85 % without condensation
Size	<ul style="list-style-type: none"> <li>Without enc.: 222 mm x 146 mm x 24 mm ( 8.74 in x 5.79 in x 0.95 in)</li> <li>With enc.: 214 mm x 142.5 x 28 mm (8.42 in x 5.61 in x 1.1 in)</li> </ul>
Weight	<ul style="list-style-type: none"> <li>Without enclosure: 280 g (9.9 oz)</li> <li>With enclosure: 620 g (21.9 oz)</li> </ul>

### Mechanical specifications with enclosure



Units in millimeters and [inches]

### Product codes for ordering

ADRD	-	MX	-	E	CT	-	SC	
								<b>MX = number of ports</b>
		M4						4 ports
								<b>E = enclosure</b>
				-				without enclosure
				E				with enclosure
								<b>CT = connector type</b>
					SMA			SMA Straight
								<b>SC = series code</b>
							160	Serie 160

Examples:

#### **ADRD-M4-SMA-160:**

- AdvanReader
- With 4 ports
- Without enclosure
- SMA connector type
- Model **160**

#### **ADRD-M4-ESMA-160:**

- AdvanReader
- With 4 ports
- With enclosure
- SMA connector type
- Model **160**



Copyright © Keonn Technologies S.L.  
All rights reserved.

Information in this publication  
supersedes all earlier versions.  
Specifications subject to change  
without notice.

