

Technical Specification

406-512 MHz 8.8dB Gain

HEAVY DUTY YAGI ANTENNA

High Performance: These antennas provide 8.8dBd, wide band performance.

Rugged and weatherproof: The construction of our heavy duty yagis feature 1" aluminum U channel with 3/8" solid elements. All exposed areas are coated with UV polyester. The balun assembly is filled and sealed with elastomeric thermoplastic.

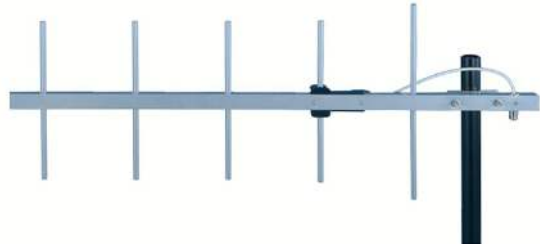
Lightweight and Durable: These antennas are easily installed by one person.

Termination Options:

Type A: 12" Teflon pigtail with N connector.

Type B: Direct TNC connection to the balun.

Type D: Direct N connection to the balun.



ELECTRICAL SPECIFICATIONS:

GAIN: 8.8dBd F/B 18dB

FREQUENCY:

Y3335 - A	370-390MHz
Y3345 - A	406-430MHz
Y3345 - B	430-450MHz
Y3345 - C	450-470MHz
Y3345 - D	470-490MHz
Y3345 - E	490-512MHz

VSWR: <2:1

VERT BEAMWIDTH: 55°

HORIZ BEAM WIDTH: 60°

RATING: 300 watts

IMPEDANCE: 50 ohms

MECHANICAL SPECIFICATIONS:

MATERIAL: 1" (2.54cm) aluminum U channel boom

3/8" (9.5mm) solid elements

FINISH: UV inhibited polyester coat

LENGTH: 32" (81cm)

WEIGHT: <4 lbs. (1.8kg)

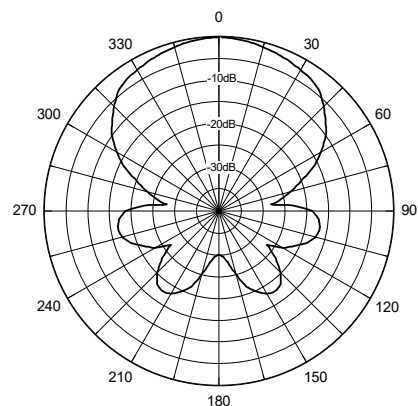
MOUNT: 2 3/8" (6cm) mast, stainless hardware

FLAT PLATE AREA: .31 ft²

WIND RATING: 125 MPH (201kph)

WIND LOAD: 18.7 lbs. (8.4kg)

Horizontal Pattern



Vertical Pattern

