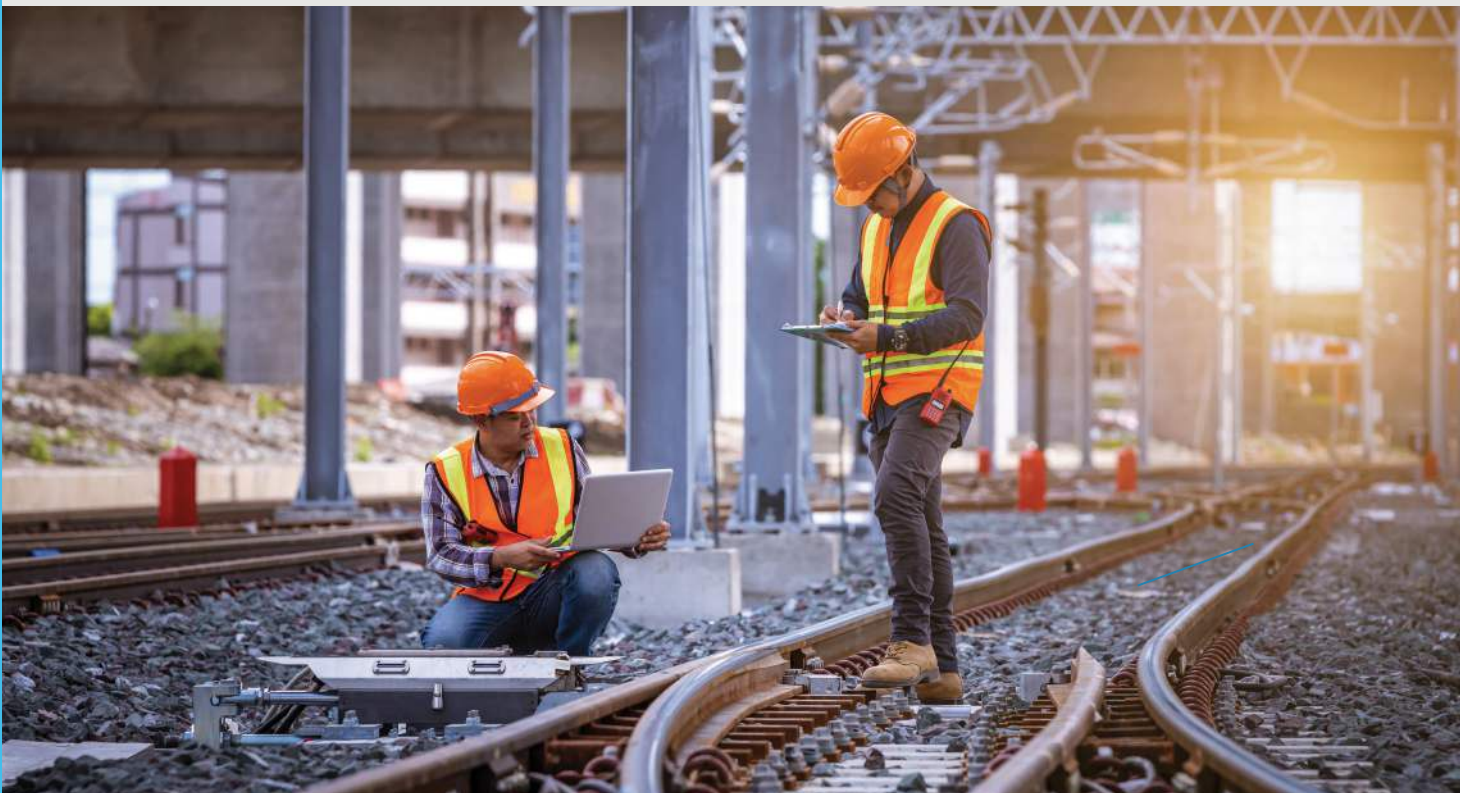


Rail Computer, Panel PC and Signage Players



Step Global offers advanced Rail Computer, Panel PC and Signage Player solutions designed specifically for rail applications. Enhance your rail operations with reliable and high-performance solutions from Step Global, enabling seamless control, efficient communication, and superior display capabilities.

Railway Panel PC



MPPC1001PC

- Intel® Atom® x7-E3950 Processor
- EN50155 (2017) & EN45545-2 certified
- Fully IP65 waterproof protection
- Supports ultra-long-life LCD panel, M12 connectors
- Flat bezel design, projected capacitive 10.4" touch screen
- Optional wireless communication
- Supports 24V DC or 72/110V DC power input
- Optional Auto dimming adjustable



BYTEM-123-PC

- EN50155 certified
- Optical bonding
- Front bezel IP65 and full IP54 protection
- Movable and programmable membrane keypad
- 24V DC power input with M12 connector, 48V DC, 72V DC or 110V DC as options
- Two M12 LAN ports and one M12 USB port
- Additional rack mount kit



BYTEM-103-PC

- EN50155 certification and IP67 rated
- Fanless and ruggedized design
- Robust M12 connectors for dual GbE, USB and power input
- Dual SIM sockets support WWAN redundancy
- Rich I/O interfaces for wireless, SSD, GPS, WWAN
- Ignition power control
- Wide-range voltage GPIO interface

Railway Panel PC



MRD-286

- 28.6 inch Bar type PIS Panel PC
- Intel® Atom® x7-E3950 / Pentium® N4200 Processor
- Sunlight readable 1000nits bar type panel
- Auto-dimming function
- IP65 front-panel waterproof protection
- Anti-scattering front side glass

Outdoor / Waterproof Signage Players



SE-603-N

- 11th Gen Intel® Core™ / Celeron® U-Series Processors
- 2x DDR4-3200 SO-DIMM, dual channel, Max. 64GB
- Intel® Processor integrated graphics device
- Supports OOB (Out-of-Band) and PDPC (Peripheral Device Power Control) functions
- 1x HDMI 2.0, 1x DVI-D, 1x DP (supports DP++)
- 1x M.2 E-Key (2230) for Wi-Fi, Bluetooth or capture card options
- 1x M.2 B-Key (3052) for 5G options
- TPM 2.0, vPro and watchdog timer
- Wide-range operating temperature: -20°C ~ 70°C
- Ruggedized, fanless and all solid state design



SE-103-N

- Intel® Atom® x6000/ Pentium® / Celeron® Processors
- 3x HDMI 2.0b with HDMI-CEC display on/off control function
- Built-in hardware EDID emulation with S/W control function
- 2x DDR4-3200 SO-DIMM, Dual channel, Max. 32GB
- 1x Intel® 2.5GbE LAN
- 1x M.2 B-Key (3052) for 5G options
- 1x M.2 E-Key (2230) for Wi-Fi, Bluetooth or capture card options
- TPM 2.0 and watchdog timer
- Industrial-grade robust, fanless and compact Design
- Wide-range operating temperature from -20°C to 70°C



SE-102-N

- Intel® Atom™ x7/x5 / Pentium® / Celeron® Processors
- Intel® HD Graphics 505
- 2x 2GB DDR3L-L1866, Dual channel, Max. 8GB (Non-ECC, Unbuffered) DDR3L-1600 for N3350 only
- 2x HDMI 1.4b, 1x Mini PCI-E (full-size) for Wi-Fi, Bluetooth or 4G LTE options
- Fanless, super slim and compact design
- Wide-range operating temperature from -40°C to 70°C

SW-101-N

- Intel® Atom® Processor E3845 Quad Core CPU
- 1x DDR3L-1333 SO-DIMM, Dual channel, Max. 8GB
- Intel® Processor integrated Graphics device, supports 1x HDMI port (C3 connector)
- 2x USB 2.0, 1x RS232, 1x Digital I/O (M12 connector)
- 1x Mini PCI-E for 3G, 4G LTE or Wi-Fi module, 1x mSATA for storage
- Wide-range operating temperature from -40°C ~

ARD Series Bar-Type Signage Panel PC



ARD-048-N

- 48" color TFT active matrix, wide LCD with optimum resolution 3840 x 720
- 8th Gen Intel® Core™ i5-8365UE 1.6~4.1GHz with
- Intel® UHD Graphics 620
- 2x DDR4-2400 SO-DIMM, Dual channel, Max. 32GB
- 2x USB2.0
- Ruggedized, fanless and compact design



ARD-042-N

- 42" color TFT active matrix, wide LCD with optimum resolution 1920 x 480
- Intel® Pentium® N4200 1.1Ghz~2.5GHz with Intel® SoC integrated Gen 9 18EUs Graphics
- 2x DDR3L-1866 SO-DIMM, Dual channel, Max. 8GB
- 1x M.2 B-Key (3042) for storage or 4G LTE options
- 2x RJ45 for Gigabit LAN
- 1x HDMI 1.4b
- 1x DP 1.2
- Ruggedized, fanless and compact design



ARD-037-N

- 37" color TFT active matrix, wide LCD with optimum resolution of 1920 x 540 & 1000 nits brightness
- Intel® Pentium® N4200 1.1~1.25GHz with Intel® SoC integrated Gen9 Gfx with 18EUs
- 2x DDR3L-1866 SO-DIMM, Dual channel, Max. 8GB
- 1x M.2 B-Key (3042) for storage or 4G LTE options
- 2x RJ45 for Gigabit LAN
- 1x HDMI 1.4b
- 1x DP 1.2
- Ruggedized, fanless and compact design

ARD-028-NRA

- 27.6" color TFT active matrix, wide LCD with optimum resolution of 1920 x 360 & 1000 nits brightness
- Intel® Pentium® N4200 1.1~1.25GHz with Intel® HD Graphics (Gen 9) 18 EUs SoC Integrated
- 2x DDR3L-1866 SO-DIMM, Dual channel, Max. 8GB
- 1x M.2 B-Key (3042) for storage or 4G LTE options
- 1x HDMI 1.4b
- 1x DP 1.2

Extreme Performance Signage Player

iBASE



SP-63ER

- iSMART intelligent energy-saving & Observer remote monitoring technologies
- Perfect for displaying 8K/12K video wall or menu board contents
- Supports 8th Gen Intel® Core™ Desktop Processors Up to 16x HDMI 1.3 (w/o Audio) with built-in hardware
- EDID emulation function
- Various Video Wall combination settings
- Compact and Robust Design



SI-626

- 6x HDMI1.4b with independent Audio output
- Built-in hardware EDID emulation function with software setting mode
- 7th/6th Gen Intel® Core™ Mobile Processors
- 2x DDR4-2133 SO-DIMM, Dual channel, Max. 32GB
- Flexible VW display configuration setting
- 1x Mini PCI-E (full-size) for Wi-Fi, Bluetooth, 4G LTE or capture card options
- 1x M.2 E-Key (2230) for Wi-Fi, Bluetooth
- 1x M.2 M-Key (2280) for storage
- 2x RS232 serial ports



SI-62S

- 9th/8th Gen Intel® Core™ / Pentium® / Celeron® Desktop Processors
- 2x DDR4 SO-DIMM, Max. 32GB
- Intel® Processor integrated Graphics, supports DVI-D, HDMI, DisplayPort
- Dual Intel® Gigabit LAN
- 6x USB3.0, 2x USB2.0, 4x COM, 4x SATA III 1x M.2 E-Key (2230) for Wi-Fi, Bluetooth or capture card options
- 1x M.2 M-Key (2280) for Storage or other options
- Watchdog timer, Digital I/O, iAMT (11.6), TPM (2.0)
- 1x PCI-E(x16) or 2x PCI-E(x8) based on PCI-E x16 Connectors for Matrox / AMD / Nvidia GPU card



SI-30S

- iSMART intelligent energy-saving & Observer remote monitoring technologies
- AMD Ryzen™ 3000 Series 9/7/5 series Processors
- 2x DDR4-2400 SO-DIMM, Dual channel; Max. 64GB
- 1x Mini PCI-E (full-size) for Wi-Fi, Bluetooth, 4G LTE or capture card options
- 1x M.2 E-Key (2230) for Wi-Fi, Bluetooth options
- 1x PCI-E (x16) or 2x PCI-E (x8) based on PCI-E x16 connectors for optional Matrox / AMD / NVIDIA GPU cards



Railway System Solutions

- High-performance CPU with Intel® Core™ processor
- Fanless design for rolling stock products and supports hot-swappable SATA SSD module
- Operation reliability and maintainability
- Real-time network communication for train drivers and control center
- Special design for tough environment and wide operation temperature range
- Fully compliant with E-Mark certificate for rolling stock products



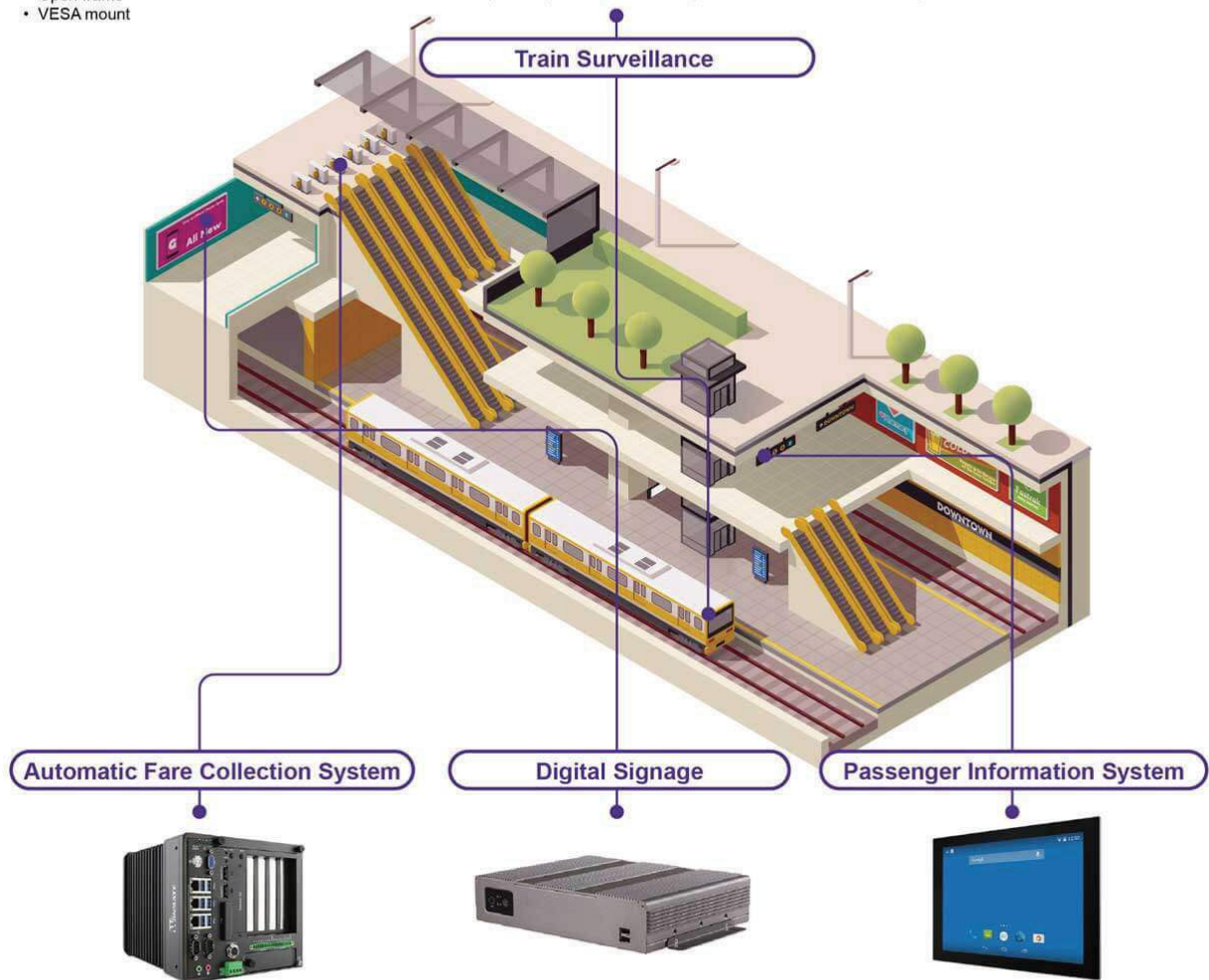
- Control Room**
W24L100-POA2
- 23.8", 1920 x 1080
 - VGA and HDMI input
 - Open frame
 - VESA mount



- FM07A**
- Android-based i.MX 6 Dual Core 1 GHz Processor
 - 7" 1024 x 600 panel with projected capacitive Multi-Touch screen
 - Wide power input 9-24V DC with ignition



- EACIL20**
- Intel® Apollo Lake N3350 1.1 GHz
 - Fanless cooling system
 - Compact size 100 x 70 x 31 mm(w/o mounting bracket)



Automatic Fare Collection System



- EAC PRO-1K90**
- 6th Generation Intel® Xeon® E3, 7th Generation Core™ i7/i5/i3 Processors
 - HD 4K resolution & 4U Height Design
 - Flexibility, Connectivity and Multi-Expansion

Digital Signage



- IB70SB7-101**
- Intel® Celeron® Bay Trail-M N2930, 1.83 GHz
 - Flexible storage devices, One 2.5-inch HDD and One Mini PCIe SSD
 - Multiple I/Os, Three Serial Ports and Six USB Ports (1 x USB 3.0)

Passenger Information System



- R15FA3S-PCC3-POE**
- 15" 1024 x 768 TFT LCD with Projected Capacitive Multi-Touch (PCAP)
 - NXP i.MX6 Dual Core 1 GHz (Optional Quad Core)
 - Fanless and ultra-low power consumption

Rugged Handheld Computer

Winmate is a provider of rugged mobile devices and communication solutions for a variety of industries. One of their key offerings is their line of Push-to-Talk over Cellular (PoC) handheld devices, which are designed to enable reliable and efficient communication in challenging environments.

These PoC handhelds are built to withstand harsh conditions and are equipped with features such as water and dust resistance, drop resistance, and loud and clear speakers. This makes them ideal for use in a variety of industries, including logistics, security, traffic management, airports, and large events.

The devices also offer instantaneous communication across WLAN/WWAN networks, which can be critical in emergency situations. The large PTT button enables quick and easy group calls, while the touch screen is responsive enough to be used even with gloves or wet hands.



P400M9-DMRBH

4" Multi-mode PoC Radio with
Barcode Reader



P400M9

4" ARM A73 + A53 Rugged
Handheld Computer



P400M9-DMR

4" Multi-mode PoC Radios



Rugged Laptop Computers

Winmate has introduced its latest L140 Rugged Laptop, which is powered by an Intel® Core™ processor Tiger Lake and Windows 10 IoT Enterprise operating system. This waterproof laptop is designed to support comprehensive wireless connectivity options such as Wi-Fi, BT, GPS/ GLONASS, and 4G LTE (optional) to keep workers connected even in the most remote locations. The L140 also features a popular daylight-readable panel with a resolution of 1920 x 1080 and direct optical bonding, anti-glare treatment, and a user-friendly projective capacitive touch screen. The Winmate L140 waterproof laptop offers a new generation of compact and lightweight portability in a robust form factor.

The Winmate L140TG Rugged Laptop is an innovative solution designed to help the challenging work of the public sector, such as the Police, Fire brigades, and Rescue Services. This system communicates with the operation center and provides commanders with various management and decision support tools during all phases of an incident. The laptop is built to withstand the harshest environments while sustaining the highest degree of functional connectivity, making it the perfect choice for tough and demanding environments.



L140TG-3

13.3inch Rugged Laptops with Intel® Core™ i5-1135G7

L140TG-4

14inch Rugged Laptop with Intel® Core™ i5-1135G7

L140V2-3

13.3inch Rugged Laptops with AMD RYZEN V2516T



L140V2-4

14inch Rugged Laptops with AMD RYZEN V2516

Rugged Windows Tablets



M140TG Series

14" Intel® Core™ i5-1135G7 Windows Rugged Tablet

- 11th Gen. Intel® Processor Family – Tiger Lake Processor
- 14-inch tablet, 1920 x 1080 wide viewing angle LED Panel
- Optical bonding and Antiglare technology for sunlight readability
- IP65 waterproof and dustproof
- Hot-swappable battery for whole day work
- Optional integrated Smart Card Reader



M116TG Series

11.6" Windows Rugged Tablet with Intel® Core™ i5-1135G7

- 11.6" 1920 x 1080, 850 nits IPS LED Panel with direct optical bonding
- Intel® Core™ i5-1135G7 Tiger Lake processor
- IP65 waterproof and dustproof, MIL-STD-810H shock, vibration and drop resistance
- Sunlight readable with antiglare solution
- Hotswappable battery design
- USB Type-C port support power delivery 20V In



S101TG Series

10.1" Windows Rugged Tablet with Intel® Core™ i5-1135G7

- Windows rugged tablet with 11th generation Intel® Tiger Lake processor
- 1920 x 1200 WUXGA with PCAP touch
- Anti-glare screen protection film
- Sunlight readability technology
- 2MP Webcam , 8MP Auto-Focus Rear Camera
- IP65 waterproof and dustproof
- MIL-STD-810H shock, vibration and drop
- Ethernet thru Giga LAN (RJ45)



S101M9 Series

10.1" ARM A73 + A53 Industrial Android Durable Tablet

- 10.1" 1920x 1200 TFT LCD Display, industrial android durable tablet
- 8.0 MP Camera in Front Side
- 13.0 MP Rear Camera (with LED auxiliary light, Auto Focus)
- 4 GB RAM + 32 GB eMMC
- Android™ 11.0
- Integrated 1D/2D Barcode Reader (Optional)
- Integrated NFC Module (Optional)



Open Frame Displays

When it comes to industrial displays, Winmate is a brand that is synonymous with quality and reliability. Their Open Frame Display is no exception. Designed to meet the demanding requirements of various industrial applications, the Winmate Open Frame Display is a versatile and durable display solution that can be customized to meet your specific needs.

One of the key features of the Winmate Open Frame Display is its rugged design. The display is housed in a sturdy aluminum frame that is designed to withstand harsh industrial environments. It is also IP65-rated, which means it is protected from dust, water, and other environmental contaminants. This makes it an ideal display solution for a wide range of industries, including manufacturing, automation, transportation, and more.

The Winmate Open Frame Display also offers a high-quality LCD panel that delivers bright and clear images with a high resolution. It is available in a range of sizes, from 8.4 inches to 21.5 inches, allowing you to choose the perfect size for your application. Additionally, the display features a resistive touchscreen that provides precise and responsive touch input. The touchscreen is also highly durable, with a scratch-resistant surface that can withstand repeated use.

In terms of connectivity, the Winmate Open Frame Display offers a variety of options, including VGA, DVI, and HDMI. It is also compatible with a wide range of operating systems, including Windows, Linux, and Android, making it easy to integrate into your existing industrial system. The display can also be customized with additional features, such as a high brightness panel, a tempered glass overlay, and a vandal-resistant touchscreen.



W07T700-OF01HB
7" Open Frame
High Brightness Display

R10L100-OF03
10.4" Open Frame Display



Outdoor Display

W24L100-PMC10D
23.8" Resistive Touch
Panel Mount Display



R10L100-PMT20D
10.4" Resistive Touch
Panel Mount Display

When it comes to commercial and industrial applications, outdoor displays are a popular choice due to their ability to attract more attention than traditional posters and offer real-time content updates. From retail and transportation to industrial automation and healthcare, outdoor displays are well-suited for a wide range of industries.

Winnate's outdoor LCDs are designed with reliability in mind, delivering outstanding image clarity and light transmission with a stable, drift-free operation. Our outdoor displays come in a range of sizes, touch technologies, and brightness levels, making them extremely versatile.

At Winnate, we understand that each customer has unique requirements, which is why we offer a wide range of customization options. These options include touch panel size, customer logo, optional heater, glass cover surface treatment, and display port (VGA, HDMI, and DVI).

Winnate's outdoor displays offer a reliable and customizable solution for businesses looking to showcase their products or services. Whether you need a flush-mounted display or one fully encased behind a cover glass, our robust industrial monitor products are purpose-built for durability in various applications and environments. We take pride in delivering high-quality outdoor displays that can withstand harsh weather conditions, extreme temperatures, and other challenging environments.



1, Arco Lane
Heatheron, Vic, 3202

e: sales@stepglobal.com
p: +61 3 9551 7334

website: www.stepglobal.com
store: www.shop.stepglobal.com

